

## Manicures & Pedicures

	Luxury	Deluxe With Heated Boots	Elite With
Paraffin Wax			
Manicure	£25 (45mins)	£30 (1.5hr)	£40 (1.5hr)
Pedicure	£25 (45mins)	£30 (1.5hr)	£40 (1.5hr)
Mani/Pedi	£47 (1.5 hrs)	£57 (3hrs)	£75 (3hrs)

**O.P.I polish included as standard - Upgrade to Gel for £8 more or £15 for Mani/Pedi (15mins)**

### Nail Treatments

	Shape & O.P.I Polish	Gelish Polish
Hands	£15 (30 Mins)	£22 (45-60 Mins)
Feet	£15 (30 Mins)	£22 (45-60 Mins)
Hands & Feet	£27 (60 Mins)	£40 (1.5hrs)

### Removal

	Hands or Feet*	Both*
Gel Polish Removal	£10 (25 mins)	£18 (40 mins)

\*Removal free with re-application of Gel polish

## Acrylic and Sculpture Gel Nails

Dip Acrylic Nails	(1 hr)	£30
Tips	(2 hrs)	£30
Infills	(1.5hrs)	£23
Overlay on natural nail	(1hr)	£20
Patterned Tips	(2 hrs)	£32
Sculpted Tips (for nail biters)	(2.5 hr)	£35
Encapsulated gems/glitters/beads	(2.5 hr)	£35
Acrylic/Gel Removals & Mini Manicure (45-60 mins)		£20

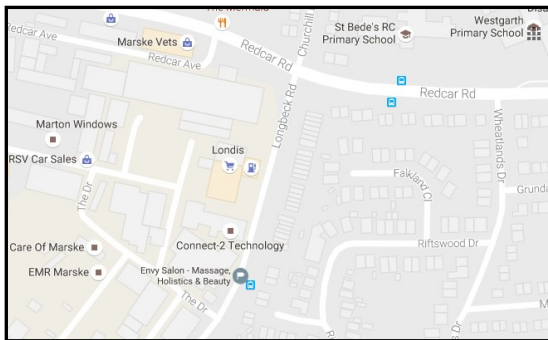
\*Add £8 for Gel Polish finish per treatment (15mins)

\* Removal £10 when having a new set of nails on.

Stamped Art 1 Colour £1 Per Nail 2-4 Colours £2 Per Nail

Diamantes/Transfers/Caviar/Glitter dip £2 Per Nail

Full Diamante/3D nails/ £5 Per Nail



Find Envy Salon

AAA House, Longbeck Road, Marske, TS11 6EZ

Free Phone: 0800 772 3349 E-mail: [victoria@envysalon.co.uk](mailto:victoria@envysalon.co.uk)

Web: [www.envysalon.co.uk](http://www.envysalon.co.uk)

## Hair Styling & Extensions

Dry Cut		
Clipper Cut / Kids under 12		£9
Scissor Cut		£18
Wet Cut & Finish		£25
'Curl Envy' Specialised Curly Cut		£35
Wash & Blow Dry		£20
Creating Curls	from £15	Pin Up £20
Standalone Olaplex Conditioning Treatment		£35
Olaplex No.2 Mini Treatment		£20

A skin test is required at least 24 hour prior to colour/perms

Colour Re-touch (Roots)	£35
Full Head Colour (above shoulder)	£45
Full Head Colour (below shoulder)	£55
Half Head High/Lowlights	£55
Full Head High/Lowlights	£65
for Highlights AND Lowlights add £15	
Balayage	£75

Perm (Permanent wave)	
Short Hair	£45
Long Hair	£55

\*Olaplex is included in the price of all colours and perms



	**Tapes	Weave	Micro Rings	Nano Rings
Half Head from	£120	£160	£180	£195
Full Head from	£199	£260	£280	£295
Install/Removal/ Maintenance	* Prices include fitting £30 per hour			

\*\*Prices based on 100% Human Remi 3 month wear Indian hair. Brazillian & Russian also available in a huge range of colours at additional cost.



Like Us On **facebook**  
**Facebook** Envy Salon @envysalonuk  
**Twitter** @envysalonuk  
**Instagram** envy\_salon\_marske



the guild  
of Beauty Therapists



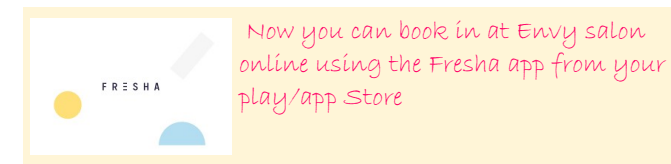
the guild  
of Holistic Therapists



## Treatment Menu 2021



## Therapeutic Massage Holistic Therapies Nails & Beauty Hairdressing



# Holistic Health & Massage

## Swedish Massage

25 Mins £25      55 Mins £35      85 Mins £45

An invigorating stress relieving massage that aids sufferers of tension knots and nodules, whilst providing deep relaxation.

## Deep Tissue Massage

25 Mins £25      55 Mins £35      85 Mins £45

Ideal for clients wanting a deeper massage particularly helpful with chronic conditions and pain. Includes trigger points, palpation, neuro-muscular and hands free techniques.

## Aromatherapy Massage

25 Mins £30      55 Mins £40      85 Mins £50

A blend of essential oils, individually suited to each clients personal needs in this deeply relaxing massage.

## Pregnancy & Postnatal Massage

Side Lying Position      55 Mins £35      85 Mins £45

Deeply relaxing & rejuvenating, helping to work out all the aches & pains that pregnancy brings, whilst being supported in a side lying position. Abdomen not massaged. Ideal to buy as a course as pregnancy progresses. Gift vouchers available.

## Hot 'Stones' Lava Shells Massage

55 Mins £45      85 Mins £60

The heated Lava Shells are used on the back, arms and legs to make this relaxing massage perfect for those with tight muscles that need warming and soothing.

## Indian Head Massage

45-60 Mins      £35

A de-stressing massage that includes the back, neck, shoulder, scalp and face areas, on top of or under clothes, with or without oil in hair to suit the clients preference.

## Usui Reiki with Crystals

45 Mins      £30

This powerful healing treatment restores flow to the body's energy centres and is used to relax, reduce stress levels and can help with mental health worries and emotional healing.

## Foot & Leg/Hand & Arm Massage

30 Mins      £20

A simple massage to relieve tired feet and legs or achy hands & arms

## Reflexology

45-60 Mins      £30

Ideal for those with internal organ issues that cannot be massaged directly, this soothing treatment is performed on the feet to restore flow to the body's systems.

## IONIC Foot Detox

45 Mins      £15

# Facials

## Mini Facial

(30 Mins)      £25

Deep Cleanse, Exfoliate, Mask, Tone Moisturise

## Anti-Aging Facial

(60 Mins)      £35

Deep cleanse, Face wash, steam off with hot towel, exfoliate, face mask, steam off with hot towel, tone, massage with aromatherapy oil.

## Maxi Lift Facial

(60 Mins)      £40

Using six specialised techniques following the Anti-Aging facial, the muscle tone is rejuvenated and the skin tightened.

## Temple Spa Facial

(60 Mins)      £45

Temple Spa deep double cleanse & wash, gentle exfoliation with Konjac sponge, steamer to open pores, Temple Spa mud mask, steam to remove mask, Temple Spa mattifying moisturiser and face neck and décolletage massage.

## Back Cleanse

(1hr 15Mins)      £35

For those who suffer with spots/congestion on their backs, using products designed for acne and includes a massage.

## Henna, Make Up & Hair Packages

Henna Tattoo	from	(30 Mins)	£20
Hair Pin Up		(45 Mins)	£25
Hair Curled		(30 Mins)	£15
Professional Make Up		(45 Mins)	£15
Hair Pin Up, Gel Nails & Make Up		(2 Hours)	£60
Hair Pin Up, Gel Nails, Make Up & Spray Tan (2h15)			£70

## Hopi Ear Candling

30 Mins      £20

This relaxing treatment is a great alternative to syringing for many people and is also recommended for those who suffer with ear pressure from flying, hay fever or sinuses.

## Anti-Cellulite Wrap

(60 Mins)      £45

Using all natural, specifically ingredients, this amazing wrap shrinks fat cells, which are then massaged to drain them, leaving you smoother skin, fat loss and even inch loss with no dehydrating.

## Ear Piercing

from      £15

## Spray Tanning

(30 Mins)      £15



100% Remi Human Hair  
Extensions From £99

# Lashes

A skin test is required at least 24 hour prior to tint or glue

**Lash Lift** (60 Mins)      £35

Your own lashes, tinted & permanently curled lasting 6-12 weeks. Patch test required 24/48hrs before

## Semi-Permanent Lashes

Individual lashes attached to each of your own lashes with sensitive semi-permanent glue. Lasts up to 4 weeks

**Light Set** 35 lashes/eye (60 Mins)      £30

**Medium Set** 50 lashes/eye (60 Mins)      £35

**Heavy Set** 70 lashes/eye (90 Mins)      £40

Infills (approximately every 2/3 weeks)

**Light £15      Medium £20      Heavy £25**

Please Note; If lashes are very sparse when coming for infills a full set may be required instead at your therapists discretion.

## Party Lashes

(30 Mins)      £15

Clusters of eyelashes placed on top of your own lashes with eyelash adhesive. Lasts 24-72 hours.

## Waxing & Tints

Eyebrow (15 Mins)      £8

Upper Lip (15 Mins)      £8

Chin (10 Mins)      £8

Half Leg (45 Mins)      £18

Full Leg (60 Mins)      £22

Underarms (15 Mins)      £10

Forearms (15 Mins)      £10

Bikini (15 Mins)      Edges (Triangle) £10

Brazilian (Strip) £14

## Eyelash Tinting

(15 Mins)      £8

## Eyebrow Tinting

(15 Mins)      £8

## Wax/Tint Saver Packages

Eyebrow Wax & Tint (30 Mins)      £12

Brow & Chin Wax (30 Mins)      £14

Brow Wax & Tint, Lash Tint (30 Mins)      £16

Brow/Lip/Chin Wax (30 Mins)      £16

Half Leg/Underarms/Bikini Wax (1Hr 15 Mins)      £35

## Male Waxing

Chest (20 Mins)      £20

Torso (30 Mins)      £15

Arms (each/tattoo sleeves) (20 Mins)      £15

Back (& Shoulders) (30 Mins)      £25

Nose & Ear (10 Mins)      £10

Beard (30 Mins)      £15

SAVER DEAL Chest/Torso/Back Wax (90 Mins)      £46